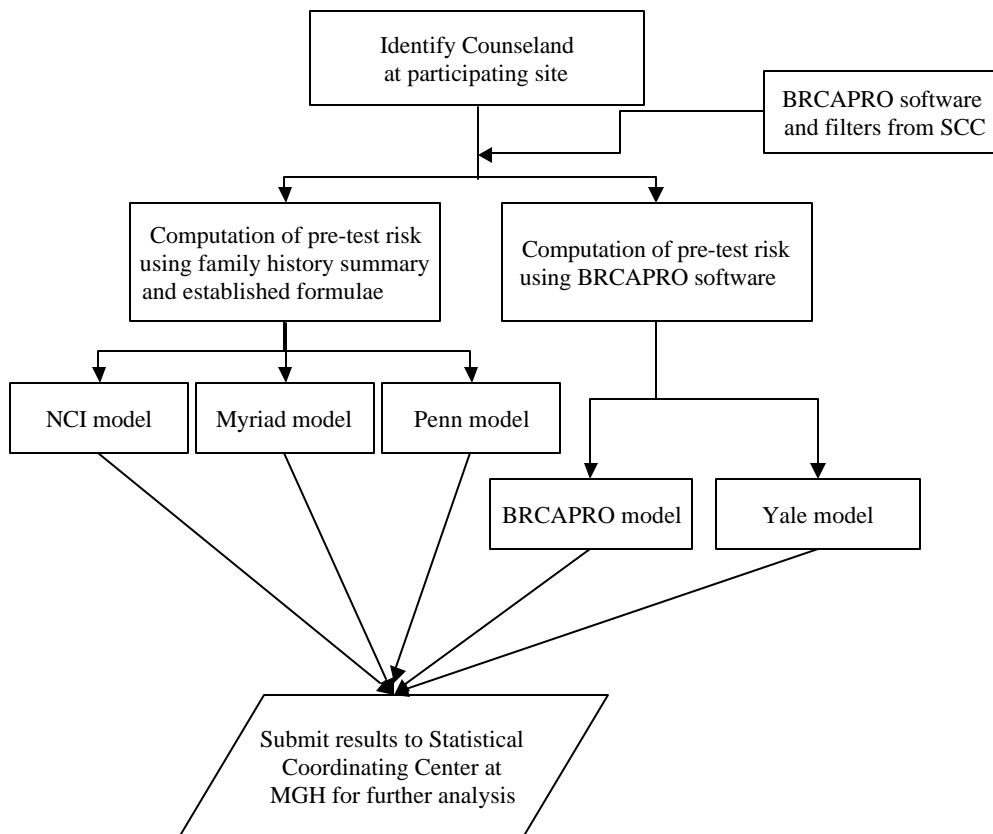


VALIDATION OF BRCA1&2 CARRIER PROBABILITY MODELS

Principal Investigator: Giovanni Parmigiani, Ph.D.
Study Statistician: Giovanni Parmigiani, Ph.D.
Statistical Center Coordinator: Dianne Finkelstein, Ph.D.

Study Start Date: 6/2000
Accrual End Date: 6/2002
Study End Date: n/a

Schema:



VALIDATION OF BRCA1&2 CARRIER PROBABILITY MODELS

Study Objectives:

- **Database** - To define and assemble a common database of individuals tested for BRCA1 and/or BRCA2 from CGN sites.
- **Model Comparison and Validation** - To assess the predictive performance of each of the alternative carrier probability models considered, and to compare their theoretical and empirical strengths and limitations.
- **Recommendations for Utilization and Improvement** - To develop indications for practical use and future improvement of carrier probability models.

Eligibility:

- BRCA1 and/or BRCA2 testing
- Minimum ascertainment information: knowledge of family participation in specified studies of familial breast cancer and criterion for family inclusion in database

Participating CGN Institutions:

- Baylor College of Medicine
- Duke University
- Fred Hutchinson Cancer Research Center
- Georgetown University
- Huntsman Cancer Institute
- Johns Hopkins University
- MD Anderson Cancer Center
- University of California, Irvine
- University of Pennsylvania
- UT Southwestern

Data Management and Statistical Support:

Statistical support is provided by staff at the Johns Hopkins University and Massachusetts General Hospital

Accrual

Total 3364