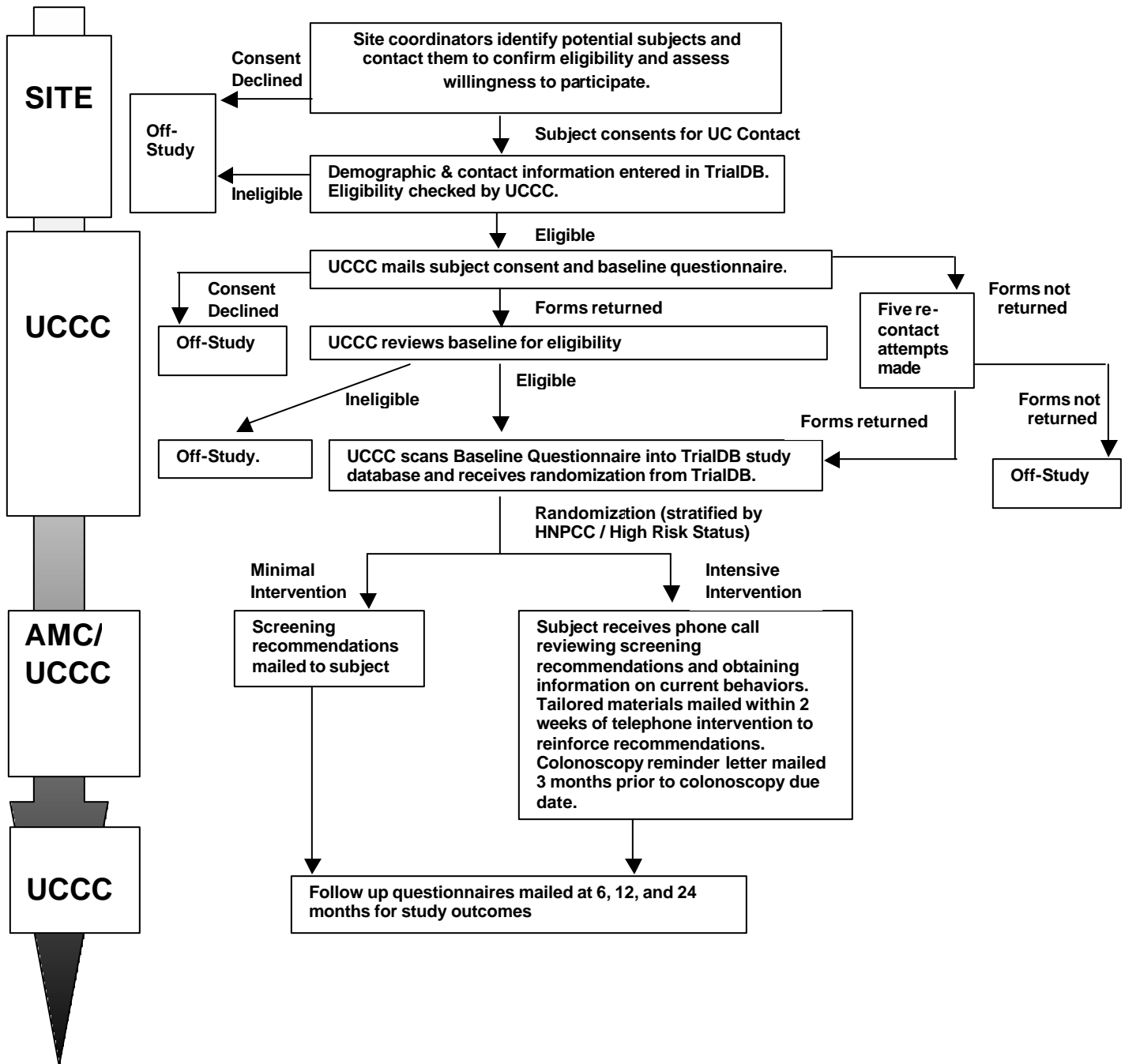


FAMILY HEALTH PROMOTION PROJECT

Principal Investigator:	Dennis Ahnen, MD	Accrual Start Date:	9/2004
Study Statistician:	Dianne M. Finkelstein, Ph.D	Accrual End Date (Projected):	9/2005
Project Coordinator:	Theresa Mickiewicz, MSPH	Study End Date:	9/2008
Statistical Center Coordinator:	Amanda Tweed	Data Cut-off Date for Report:	1/15/2005
Data Management:	University of Colorado – AMC		
Statistical Support:	MGH Statistical Coordinating Center		
Funding Source(s):	NCI R01		
Participating Groups:	CGN, CCFR		

Goal: To develop an exportable intervention to promote regular colonoscopic surveillance among individuals at increased risk of developing colorectal cancer



FAMILY HEALTH PROMOTION PROJECT

Study Objectives

- 1) *Develop a prototype intervention to promote colonoscopic surveillance among the high-risk populations enrolled in participating CGN and CCFR sites, for utilizing in a randomized controlled trial.* This intervention will include brief telephone education and barriers counseling, with follow-up tailored mailouts to reinforce the telephone component of the intervention.
- 2) *Test this intervention for efficacy within a randomized two-group design* (minimal intervention vs. a more intensive intervention), with follow-up assessments occurring at 6, 12, and 24 months.
- 3) *Explore potential moderator and mediating variables*, including a new familial communication assessment, that will further specify and elucidate significant intervention effects, if such effects are observed.

Eligibility Criteria

- **HNPCC Families**
 - Unaffected
 - First degree relative meets Amsterdam I criterion for HNPCC: three cases of colorectal cancer spanning at least two generations with one diagnosis having occurred before age 50
 - 25 years of age or older **OR**
 - 10 years younger than the youngest CRC diagnosis in the family (whichever is youngest)

- **Non-HNPCC Families**
 - Unaffected
 - Two or more relatives with CRC and does not meet Amsterdam I or II criteria **OR**
 - One first degree relative diagnosed with CRC before age 50 **AND**
 - 40 years of age or older **OR**
 - 10 years younger than earliest CRC diagnosis in family (whichever is youngest).

Participating Sites

CGN sites:

Huntsman Cancer Institute
University of Colorado

CCFR Sites:

University of Colorado
University of Arizona
University of North Carolina
University of Minnesota
University of Southern California
Cleveland Clinic
Fred Hutchinson Cancer Research Center

Accrual

As of January 15, 2005: 117